

MODEL	X53A	
Ø OUTPUT SHAFT	30	mm
APPROXIMATE RATIO	193	
EXACT RATIO	193.36	
OUTPUT SPEED	8	RPM
EXACT OUTPUT SPEED	8	RPM
INPUT POWER	0.12	KW
INPUT ROTATION	1400	RPM
INPUT PAM	63B5	
OUTPUT TORQUE	148.77	N.m
NOMINAL TORQUE	250.00	N.m
NOMINAL POWER	0.2	KW
SERVICE FACTOR	1.67	
DYNAMIC EFFICIENCY	0.94	

#### Oil Quantity (L)

B3/H1	B6/H4	B7/H3	B8/H2	V5/H5	V6/H6
1.3	1.55	0.85	1.45	2.1	1.25

#### Radial and Axial Loads



$n_2$ [min-1]	FA [N]	FR [N]
250	600	3000
100	800	4000
50	960	4800
15	1660	8300

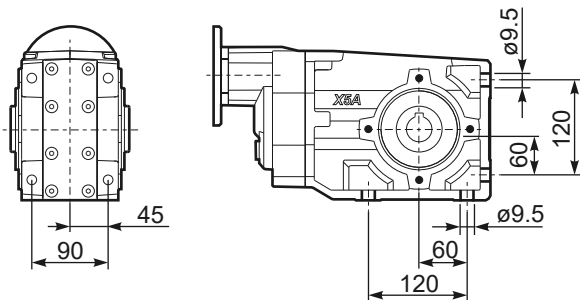
**PX53AC...** Basic Gearbox  
Riduttore base

Gearbox weight **12.65 kg**  
peso riduttore

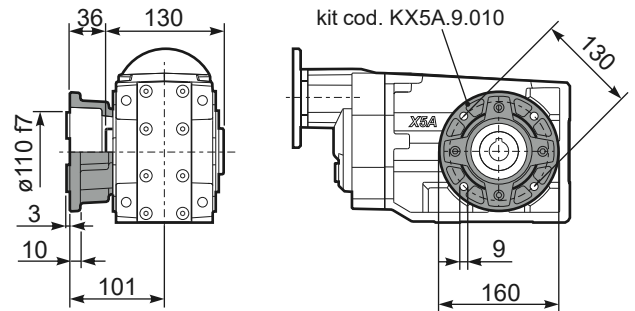
M. flanges	Kit code	øF	A
<b>63B5</b>	K063.4.041	140	246
<b>71B5</b>	K063.4.042	160	244
<b>80/90B5</b>	K063.4.043	200	246
<b>71B14</b>	K063.4.047	105	244
<b>80B14</b>	K063.4.046	120	246
<b>90B14</b>	K063.4.041	140	246



**PX53A...FB..** Feet  
Piedini



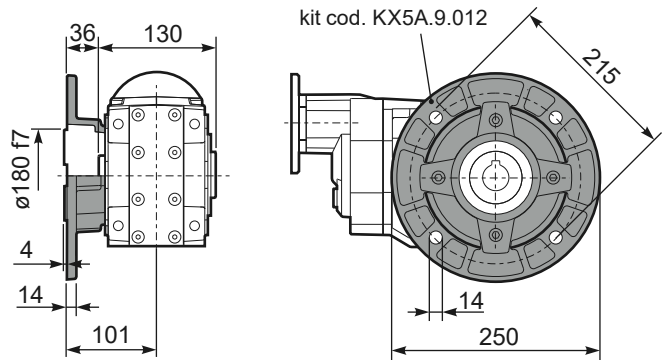
**PX53A...-F2..** Output flange  
Flangia uscita



**PX53A...-F3..** Output flange  
Flangia uscita



**PX53A...-F4..** Output flange  
Flangia uscita



**RX53A...** Input shaft  
Albero in entrata



**PX53A...BR..** Reaction Arm  
Braccio di reazione



**PX53AA..** Single output shaft  
Albero semplice in uscita

