

MODEL	211A	
Ø OUTPUT SHAFT	14	mm
APPROXIMATE RATIO	2.5	
EXACT RATIO	2.35	
OUTPUT SPEED	584	RPM
EXACT OUTPUT SPEED	621	RPM
INPUT POWER	0.25	KW
INPUT ROTATION	1400	RPM
INPUT PAM	71B14	
OUTPUT TORQUE	3.69	N.m
NOMINAL TORQUE	12.00	N.m
NOMINAL POWER	0.76	KW
SERVICE FACTOR	3.04	
DYNAMIC EFFICIENCY	0.92	

#### Oil Quantity (L)

B3/H1	B6/H4	B7/H3	B8/H2	V5/H5	V6/H6
0.05	0.05	0.05	0.05	0.05	0.05

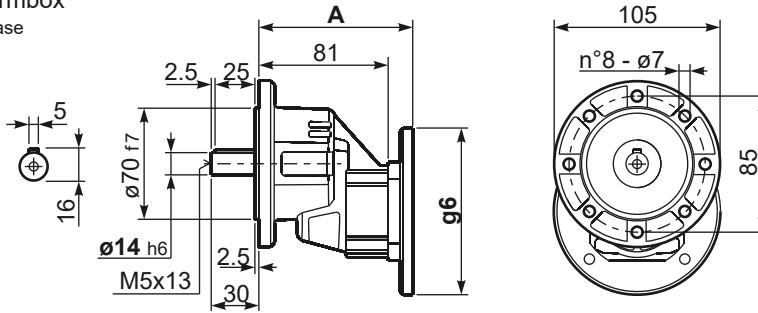
#### Radial and Axial Loads



$n_2$ [min-1]	$F_A$ [N]	$F_R$ [N]
700	101	504
400	138	696
200	175	876
140	192	960

**P211A-F...** Basic wormbox  
Riduttore base

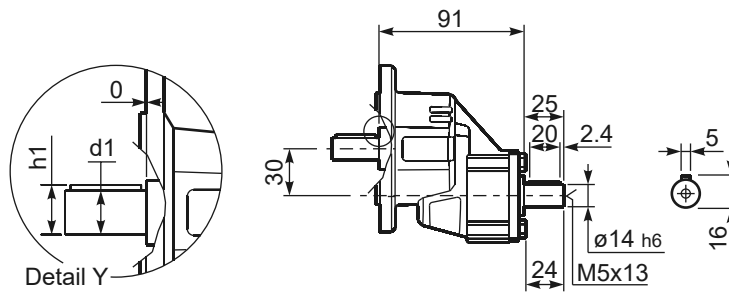
Gearbox weight  
peso riduttore **1.40 kg**



B5 Motor Flanges	A	g6	kit code
63 B5	99.5	138	K050.4.041
71 B5	97	160	K050.4.042

B14 Motor Flanges	A	g6	kit code
56 B14	97	80	KC40.4.049
63 B14	99.5	90	K050.4.047
71 B14	97	105	K050.4.045

**R211A-F...** Basic wormbox  
Riduttore base



\*Available output shaft / Albero di uscita

	Shaft - d1	p1	h1	x
Standard	$\phi 14 \times 30$	5	16	M5x13