

Technical Data Sheet  
Gearbox  
WORM GEARBOX SQUARE DESIGN



|                    |       |     |
|--------------------|-------|-----|
| MODEL              | M45   |     |
| Ø OUTPUT SHAFT     | 18    | mm  |
| APPROXIMATE RATIO  | 30    |     |
| EXACT RATIO        | 28.00 |     |
| OUTPUT SPEED       | 49    | RPM |
| EXACT OUTPUT SPEED | 52    | RPM |
| INPUT POWER        | 0.25  | KW  |
| INPUT ROTATION     | 1400  | RPM |
| INPUT PAM          | 71B14 |     |
| OUTPUT TORQUE      | 31.04 | N.m |
| NOMINAL TORQUE     | 41.00 | N.m |
| NOMINAL POWER      | 0.33  | KW  |
| SERVICE FACTOR     | 1.32  |     |
| DYNAMIC EFFICIENCY | 0.65  |     |



Oil Quantity (L)

| B3/H1 | B6/H4 | B7/H3 | B8/H2 | V5/H5 | V6/H6 |
|-------|-------|-------|-------|-------|-------|
| 0.09  | 0.09  | 0.09  | 0.09  | 0.09  | 0.09  |

Radial and Axial Loads



| $n_2$ [min <sup>-1</sup> ] | FA [N] | FR [N] |
|----------------------------|--------|--------|
| 200                        | 180    | 900    |
| 100                        | 220    | 1100   |
| 50                         | 260    | 1400   |
| 15                         | 400    | 2000   |

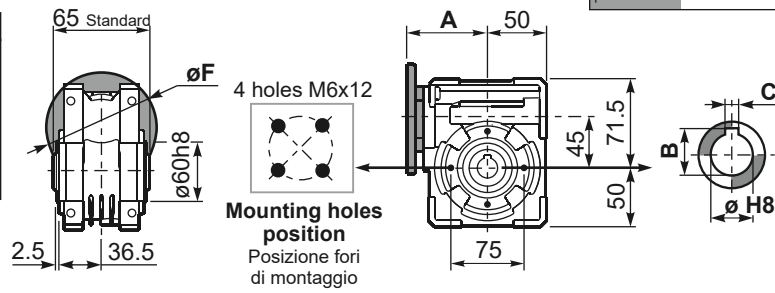
Universal Motors S.A.  
Rua Comendador Brandão, 484  
4495-375 Póvoa de Varzim  
[geral@universalmotors.pt](mailto:geral@universalmotors.pt)  
TEL.: 252 299 080

Universal Motors UK, Ltd  
Unit E2, Meltham Mills Road  
West Yorkshire HD9 4AR  
[enquiries@universalmotors-group.co.uk](mailto:enquiries@universalmotors-group.co.uk)  
TEL.: +44(0) 1484660222

Universal Motors SL  
C/La Habana n.6 nave 4 PI Camporoso  
28806 Alcala de Henares  
[info@universalmotors-group.es](mailto:info@universalmotors-group.es)  
TEL.: 918 864 213

**PM45FB...** Basic wormbox  
Riduttore base

| M. flanges   | Kit code   | øF  | A    |
|--------------|------------|-----|------|
| <b>63B5</b>  | K050.4.041 | 138 | 80   |
| <b>71B5</b>  | K050.4.042 | 160 | 77.5 |
| <b>56B14</b> | KC40.4.049 | 80  | 77.5 |
| <b>63B14</b> | K050.4.047 | 90  | 80   |
| <b>71B14</b> | K050.4.045 | 105 | 77.5 |

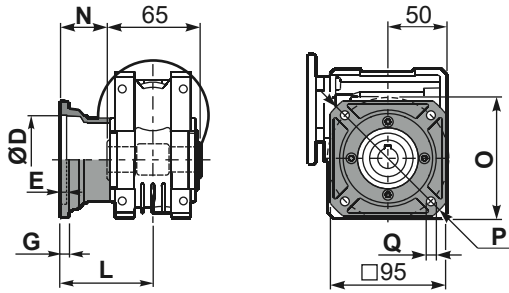


Gearbox weight  
peso riduttore **2.30 kg**

| ø H8                    | B    | C | *Spacer code |
|-------------------------|------|---|--------------|
| <b>18</b><br>Standard   | 20.8 | 6 | KM45.3.018   |
| <b>19</b><br>on request | 21.8 | 6 | KM45.3.019   |
| <b>20</b><br>on request | 22.8 | 6 | KM45.3.020   |

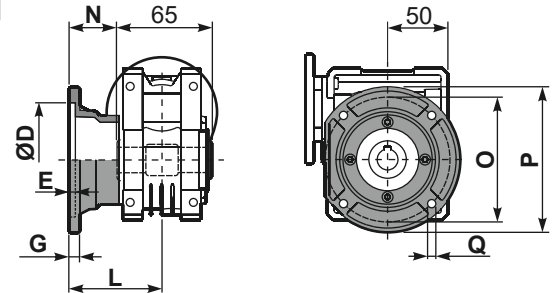
\*On Request  
output shaft with spacers

**PM45FC...** Square flange  
Flangia quadrata



| type B    | øD    | E | G | L  | N    | O  | P   | Q | kit code   |
|-----------|-------|---|---|----|------|----|-----|---|------------|
| <b>FC</b> | 60 H8 | 4 | 7 | 67 | 34.5 | 75 | 110 | 9 | KM45.9.010 |
| <b>FL</b> | 60 H8 | 4 | 7 | 97 | 64.5 | 75 | 110 | 9 | KM45.9.011 |

**PM45F1...** Round flange  
Flangia rotonda

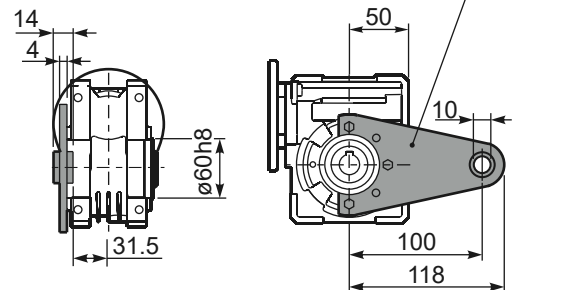


| type S    | øD   | E | G | L  | N    | O   | P   | Q   | kit code   |
|-----------|------|---|---|----|------|-----|-----|-----|------------|
| <b>F1</b> | 95H8 | 5 | 9 | 80 | 47.5 | 115 | 140 | 9.5 | KM45.9.012 |
| <b>F2</b> | -    | - | - | -  | -    | -   | -   | -   | -          |

**PM45FB...** Feet  
Piedini



**PM45BR...** Reaction arm  
Braccio di reazione



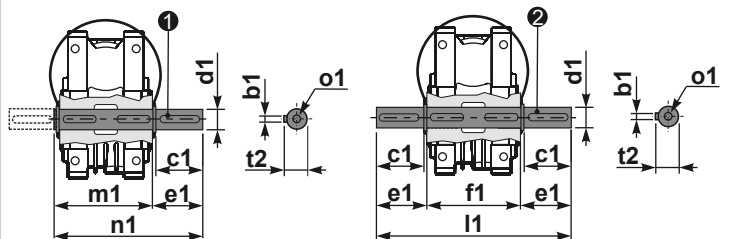
**RM45FB...** Input shaft  
Albero in entrata



|        | ød    | e    | g | l  | m  | x | kit code                         |
|--------|-------|------|---|----|----|---|----------------------------------|
| type B | 11 h6 | 12.5 | 4 | 30 | 74 | - | ① K045.5.006 PAM71<br>② -<br>③ - |
| type S | -     | -    | - | -  | -  | - | ① -<br>② -<br>③ -                |

**PM45.....S...** Single Shaft  
Albero lento semplice

**PM45.....D...** Double Shaft  
Albero lento bisp.



① kit cod. K045.5.028 type B  
kit cod. KS045.5.030 type S  
② kit cod. K045.5.029 type B

|        | b1 | c1 | d1                                     | e1   | f1 | l1  | m1 | n1    | t2   | o1    |
|--------|----|----|--|------|----|-----|----|-------|------|-------|
| type B | 6  | 32 | 18 <sup>-0.005</sup> <sub>-0.020</sub> | 43   | 65 | 151 | 70 | 113   | 20.5 | M6x18 |
| type S | 6  | 40 | 19 <sup>-0.005</sup> <sub>-0.020</sub> | 58.5 | -  | -   | 70 | 128.5 | 21.5 | M8x20 |