

Ficha Técnica  
 Reductor de velocidad  
 SIN-FIN CORONA REDONDO



|                            |       |     |
|----------------------------|-------|-----|
| MODELO                     | 030   |     |
| Ø EJE DE SALIDA            | 14    | mm  |
| RELACIÓN APROXIMADA        | 7     |     |
| RELACIÓN EXACTA            | 7.00  |     |
| VELOCIDAD DE SALIDA        | 209   | RPM |
| VELOCIDAD DE SALIDA EXACTA | 209   | RPM |
| POTENCIA DE ENTRADA        | 0.09  | KW  |
| ROTACIÓN DE ENTRADA        | 1400  | RPM |
| PAM DE ENTRADA             | 56B14 |     |
| PAR DE SALIDA              | 3.44  | N.m |
| PAR NOMINAL                | 17.00 | N.m |
| POTENCIA NOMINAL           | 0.44  | KW  |
| FACTOR DE SERVICIO         | 4.89  |     |
| EFICIENCIA DINÁMICA        | 0.80  |     |



Cantidad de Aceite (L)

| B3/H1 | B6/H4 | B7/H3 | B8/H2 | V5/H5 | V6/H6 |
|-------|-------|-------|-------|-------|-------|
| 0.03  | 0.03  | 0.03  | 0.03  | 0.03  | 0.03  |

Cargas Radiales y Axiales



| $n_2$ [min-1] | FA [N] | FR [N] |
|---------------|--------|--------|
| 200           | 120    | 600    |
| 100           | 160    | 800    |
| 50            | 200    | 1000   |
| 15            | 280    | 1400   |

Universal Motors S.A.  
 Rua Comendador Brandão, 484  
 4495-375 Póvoa de Varzim  
[geral@universalmotors.pt](mailto:geral@universalmotors.pt)  
 TEL.: 252 299 080

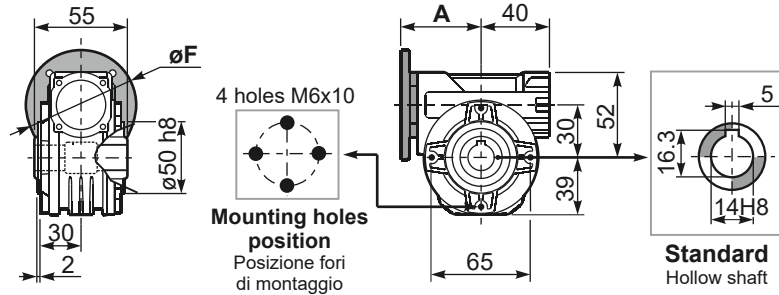
Universal Motors UK, Ltd  
 Unit E2, Meltham Mills Road  
 West Yorkshire HD9 4AR  
[enquiries@universalmotors-group.co.uk](mailto:enquiries@universalmotors-group.co.uk)  
 TEL.: +44(0) 1484660222

Universal Motors SL  
 C/La Habana n.6 nave 4 PI Camporosso  
 28806 Alcala de Henares  
[info@universalmotors-group.es](mailto:info@universalmotors-group.es)  
 TEL.: 918 864 213

P030**FB**... Basic wormbox  
Riduttore base

Gearbox weight  
peso riduttore **1.05 kg**

| M. flanges | Kit code   | øF  | A    |
|------------|------------|-----|------|
| 56B5       | K030.4.041 | 120 | 61.5 |
| 63B5       | K030.4.042 | 140 | 62.5 |
| 56B14      | K030.4.046 | 80  | 61.5 |
| 63B14      | K030.4.045 | 90  | 62.5 |

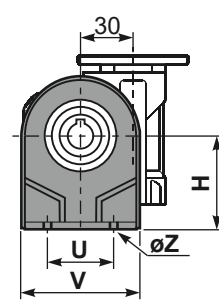
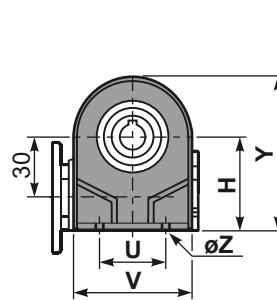
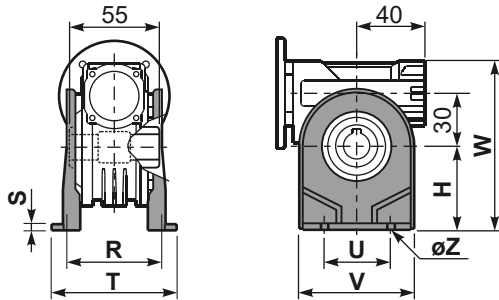


Standard  
Hollow shaft

P030**PA**... Feet  
Piedini

P030**PB**... Feet  
Piedini

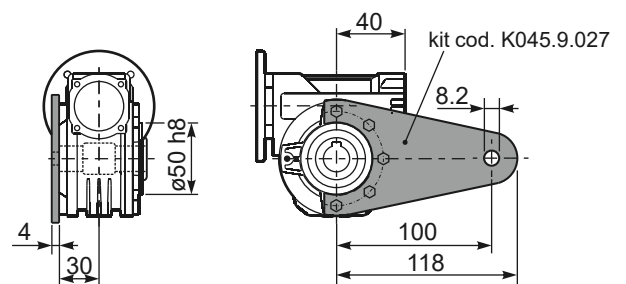
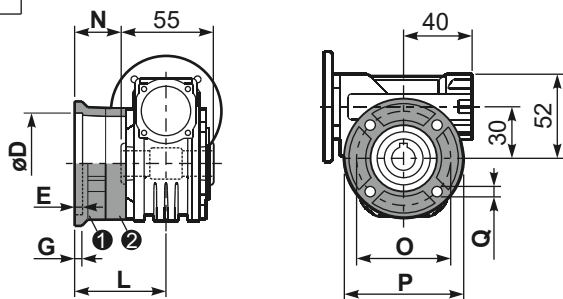
P030**PV**... Feet  
Piedini



|        | H  | R  | S | T  | U  | V  | Y  | W   | øZ   | kit code    |
|--------|----|----|---|----|----|----|----|-----|------|-------------|
| type B | 55 | 66 | 3 | 87 | 50 | 78 | 94 | 107 | ø6.5 | K030.9.022  |
| type S | 52 | 66 | 3 | 87 | 52 | 90 | 91 | 104 | ø6.5 | KS030.9.023 |

P030**FC**... Output flange  
Flangia uscita

P030**BR**... Reaction arm  
Braccio di reazione



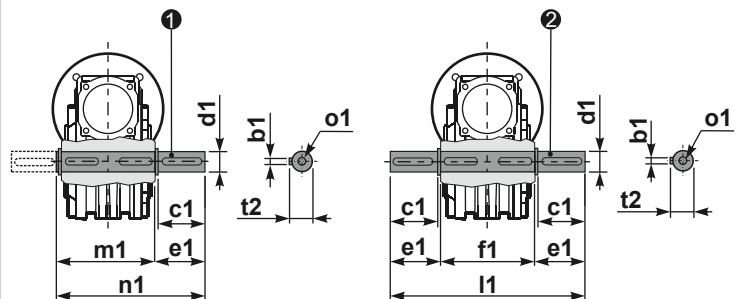
| type B | øD                                     | E | G | L    | N  | O  | P   | Q   | kit code            |
|--------|--|---|---|------|----|----|-----|-----|---------------------|
| FC     | 50 <sup>+0.15</sup> / <sub>+0.05</sub> | 6 | 6 | 50.5 | 23 | 68 | 80  | 7   | 1 K030.9.010<br>2 - |
| FL     | 60 <sup>+0.15</sup> / <sub>+0.05</sub> | 6 | 6 | 55.5 | 28 | 87 | 110 | 8.5 | 1 K045.9.010<br>2 - |

| type S | øD                                     | E   | G   | L  | N    | O  | P  | Q   | kit code             |
|--------|--|-----|-----|----|------|----|----|-----|----------------------|
| F1     | 40 <sup>+0.15</sup> / <sub>+0.10</sub> | 3.5 | 5.5 | 49 | 21.5 | 56 | 80 | 6.5 | 1 KS030.9.012<br>2 - |

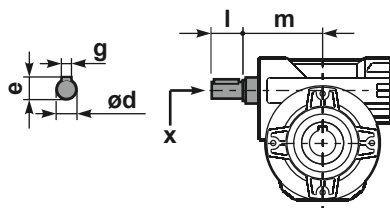
P030.....**S**... Single Shaft  
Albero lento semplice

P030.....**D**... Double Shaft  
Albero lento bisp.



1 kit cod. K030.5.028 type B 2 kit cod. K030.5.029 type B

R030**FB**... Input shaft  
Albero in entrata



|        | ød   | e    | g | l  | m  | x | kit code         |
|--------|------|------|---|----|----|---|------------------|
| type B | 9 h6 | 10.2 | 3 | 20 | 58 | - | K030.5.006 PAM63 |
| type S | -    | -    | - | -  | -  | - | -                |

|        | b1 | c1 | d1                                       | e1   | f1 | l1  | m1 | n1   | t2 | o1    |
|--------|----|----|--|------|----|-----|----|------|----|-------|
| type B | 5  | 25 | 14 <sup>-0.005</sup> / <sub>-0.020</sub> | 35.5 | 55 | 126 | 59 | 94.5 | 16 | M5x14 |
| type S | -  | -  | -  | -    | -  | -   | -  | -    | -  | -     |