

| | | |
|----------------------------|-------|-----|
| MODELO | 411A | |
| Ø EJE DE SALIDA | 19 | mm |
| RELACIÓN APROXIMADA | 3.5 | |
| RELACIÓN EXACTA | 3.29 | |
| VELOCIDAD DE SALIDA | 417 | RPM |
| VELOCIDAD DE SALIDA EXACTA | 444 | RPM |
| POTENCIA DE ENTRADA | 0.75 | KW |
| ROTACIÓN DE ENTRADA | 1400 | RPM |
| PAM DE ENTRADA | 80B14 | |
| PAR DE SALIDA | 15.48 | N.m |
| PAR NOMINAL | 38.00 | N.m |
| POTENCIA NOMINAL | 1.7 | KW |
| FACTOR DE SERVICIO | 2.27 | |
| EFICIENCIA DINÁMICA | 0.92 | |

Cantidad de Aceite (L)

| B3/H1 | B6/H4 | B7/H3 | B8/H2 | V5/H5 | V6/H6 |
|-------|-------|-------|-------|-------|-------|
| 0.1 | 0.1 | 0.1 | 0.1 | 0.1 | 0.1 |

Cargas Radiales y Axiales



| n_2 [min-1] | FA [N] | FR [N] |
|---------------|--------|--------|
| 700 | 182 | 910 |
| 400 | 230 | 1150 |
| 200 | 290 | 1450 |
| 140 | 320 | 1600 |

P411-F... Output flange
flange di uscita

Gearbox weight
peso riduttore **3.20 kg**



***Available output shaft / Alberi di uscita**

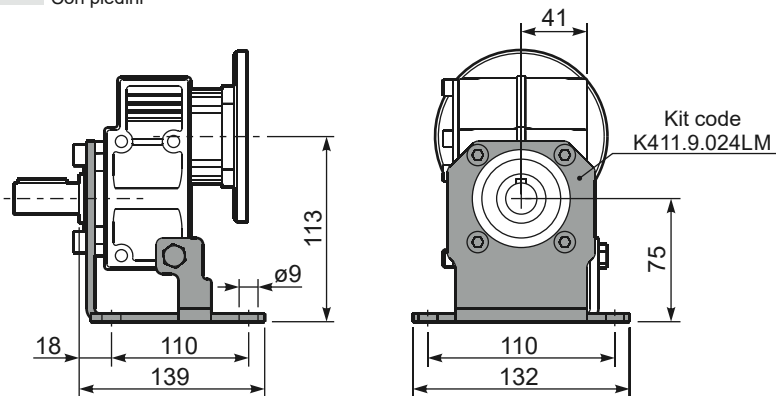
| | Shaft - d1 | p1 | h1 | x |
|---------------------------|--------------------|--------|----------|----------------|
| Standard | ∅ 19x40 | 6 | 21.5 | M6x16 |
| On request A richiesta | ∅ 14x30 ∅ 24x40 | 5 8 | 16 27 | M5x13 M6x16 |

Available output flanges / flange di uscita

| a1 ∅ | b1 | c1 | e1 | f1 | s1 | kit code |
|------|-----|------|-----|-----|----|------------|
| 120 | 80 | 11.5 | 100 | 3 | 9* | KC30.9.010 |
| 140 | 95 | 11.5 | 115 | 3 | 9 | KC30.9.011 |
| 160 | 110 | 11.5 | 130 | 3.5 | 9 | KC30.9.012 |
| 200 | 130 | 11.5 | 165 | 3.5 | 11 | KC30.9.013 |

*Holes position
posizione fori

P411-H1... With feet
Con piedini



R411-N... Input Shaft
Albero in entrata



P411-N... Basic gearbox
Riduttore base



| B5 Motor Flanges | A | g6 | k1 | kit code |
|------------------|-------|-----|-----|------------|
| 63 B5 | 121.5 | 140 | 125 | K063.4.041 |
| 71 B5 | 119.5 | 160 | 123 | K063.4.042 |
| 80/90 B5 | 121.5 | 200 | 125 | K063.4.043 |

| B14 Motor Flanges | A | g6 | k1 | kit code |
|-------------------|-------|-----|-----|------------|
| 71 B14 | 119.5 | 105 | 123 | K063.4.047 |
| 80 B14 | 121.5 | 120 | 125 | K063.4.046 |
| 90 B14 | 121.5 | 140 | 125 | K063.4.041 |