

|                            |        |     |
|----------------------------|--------|-----|
| MODELO                     | 412A   |     |
| Ø EJE DE SALIDA            | 25     | mm  |
| RELACIÓN APROXIMADA        | 62     |     |
| RELACIÓN EXACTA            | 61.89  |     |
| VELOCIDAD DE SALIDA        | 24     | RPM |
| VELOCIDAD DE SALIDA EXACTA | 24     | RPM |
| POTENCIA DE ENTRADA        | 0.18   | KW  |
| ROTACIÓN DE ENTRADA        | 1400   | RPM |
| PAM DE ENTRADA             | 63B5   |     |
| PAR DE SALIDA              | 72.95  | N.m |
| PAR NOMINAL                | 138.00 | N.m |
| POTENCIA NOMINAL           | 0.34   | KW  |
| FACTOR DE SERVICIO         | 1.89   |     |
| EFICIENCIA DINÁMICA        | 0.96   |     |

Cantidad de Aceite (L)

| B3/H1 | B6/H4 | B7/H3 | B8/H2 | V5/H5 | V6/H6 |
|-------|-------|-------|-------|-------|-------|
| 0.25  | 0.35  | 0.4   | 0.45  | 0.4   | 0.5   |

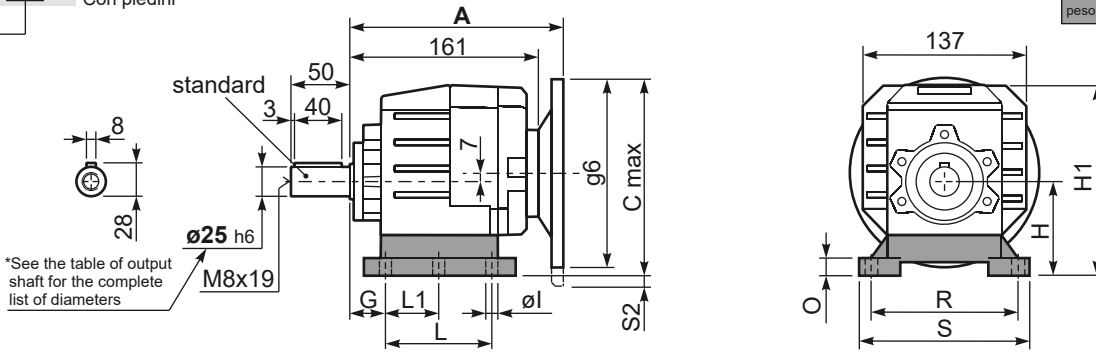
Cargas Radiales y Axiales



| $n_2$ [min-1] | FA [N] | FR [N] |
|---------------|--------|--------|
| 300           | 310    | 1550   |
| 200           | 360    | 1800   |
| 120           | 448    | 2240   |
| 70            | 540    | 2700   |

P412A **B1** ... With feet  
Con piedini

Gearbox weight **5.7 kg**  
peso riduttore With flange  
With feet **5.9 Kg**



**Feet / piedini**

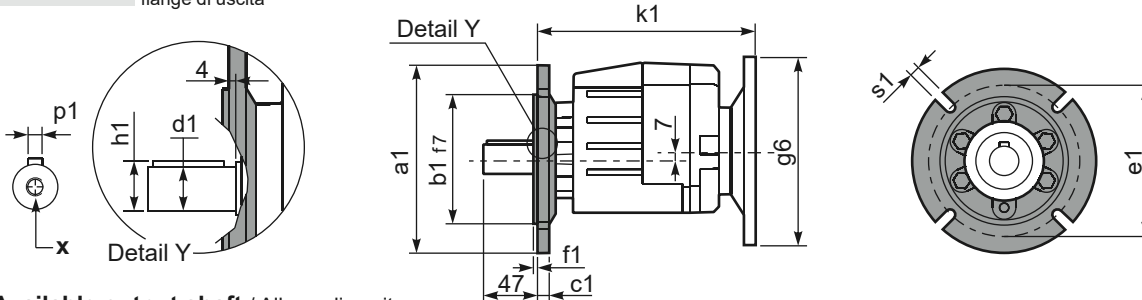
| Feet Code | Market reference | G  | H   | R       | L      | L1 | S   | H1    | O  | øl | S2 only with motor flange  | B5 max. Flange | kit code   |
|-----------|------------------|----|-----|---------|--------|----|-----|-------|----|----|----------------------------|----------------|------------|
| B1        | 112              | 18 | 85  | 110     | 87     | 50 | 130 | 167.5 | 15 | -  | 8/33 80/90B5<br>100/112B5  | -              | KC35.9.021 |
| B2        | 212/3            | 18 | 100 | 130     | 107.5  | 60 | 155 | 182.5 | 17 | 11 | 18 100/112B5               | -              | KC40.9.025 |
| S1        | 17               | 18 | 75  | 110     | 90±110 | 50 | 145 | 155.5 | 15 | 9  | 18/43 80/90B5<br>100/112B5 | -              | KC40.9.022 |
| S2        | 27               | 25 | 90  | 110     | 130    | -  | 145 | 172.5 | 20 | 9  | 3/28 80/90B5<br>100/112B5  | -              | KC40.9.024 |
| H2        | 022-223          | 25 | 100 | 110     | 115    | -  | 145 | 182.5 | 20 | 9  | 18 100/112B5               | -              | KC40.9.026 |
| M1        | 42/3             | 25 | 80  | 110±120 | 85     | -  | 145 | 162.5 | 15 | 9  | 13/38 80/90B5<br>100/112B5 | -              | KC40.9.023 |

Other feet are available, see our web site  
Sono disponibili altri piedini, consulta il nostro sito web

**A see on page bottom**

Most popular types  
Tipi più diffusi

P412A-**F** ... Output flanges  
flange di uscita



**\*Available output shaft / Albero di uscita**

|                           | Shaft - d1 | p1 | h1   | x     |
|---------------------------|------------|----|------|-------|
| Standard                  | ø 25x50    | 8  | 28   | M8x19 |
| On request<br>A richiesta | ø 16x40    | 5  | 18   | M6x16 |
|                           | ø 19x40    | 6  | 21.5 | M6x16 |
|                           | ø 20x40    | 6  | 22.5 | M8x19 |
|                           | ø 24x50    | 8  | 27   | M8x19 |

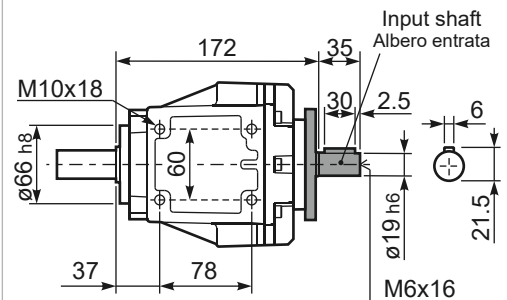
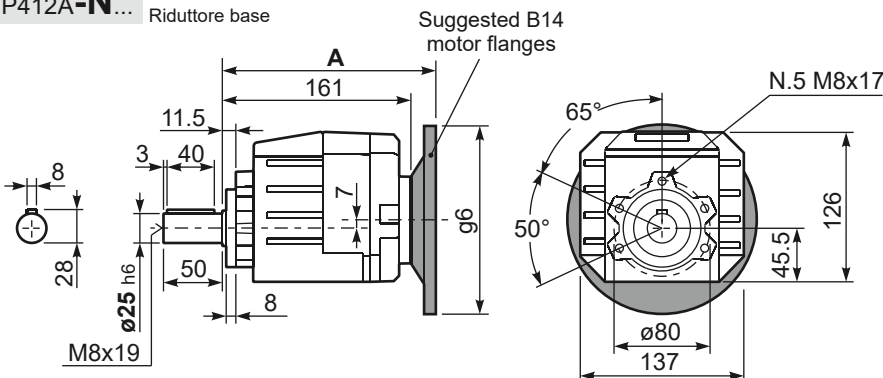
**Available output flanges / flange di uscita**

| a1 ø | b1  | c1   | e1  | f1  | s1 | kit code   |
|------|-----|------|-----|-----|----|------------|
| 120  | 80  | 10   | 100 | 3   | 7  | KC40.9.010 |
| 140  | 95  | 10   | 115 | 3   | 9  | KC40.9.011 |
| 160  | 110 | 10   | 130 | 3.5 | 9  | KC40.9.012 |
| 200  | 130 | 10   | 165 | 3.5 | 11 | KC40.9.013 |
| 250  | 180 | 11.5 | 215 | 3.5 | 14 | KC40.9.014 |

With flange and feet only on request. Ask for compatibility

P412A-**N** ... Basic gearbox  
Riduttore base

**R412A-N** ... Input Shaft  
Albero in entrata



| B5 Motor Flanges | A     | C <sub>max</sub> | g6  | k1    | kit code   |
|------------------|-------|------------------|-----|-------|------------|
| 63 B5            | 181.5 | 177              | 140 | 185.5 | K063.4.041 |
| 71 B5            | 179.5 | 187              | 160 | 183.5 | K063.4.042 |
| 80/90 B5         | 181.5 | 207              | 200 | 185.5 | K063.4.043 |
| 100/112 B5       | 196.5 | 232              | 250 | 200.5 | KC40.4.043 |

| B14 Motor Flanges | A     | C <sub>max</sub> | g6  | k1    | kit code   |
|-------------------|-------|------------------|-----|-------|------------|
| 71 B14            | 179.5 | 159.5            | 105 | 183.5 | K063.4.047 |
| 80 B14            | 181.5 | 167              | 120 | 185.5 | K063.4.046 |
| 90 B14            | 181.5 | 177              | 140 | 185.5 | K063.4.041 |
| 100/112 B14       | 196.5 | 187              | 160 | 200.5 | KC40.4.041 |