

Ficha Técnica
 Reductor de velocidad
 SIN-FIN CORONA CUADRADO



| | | |
|----------------------------|-------|-----|
| MODELO | M45 | |
| Ø EJE DE SALIDA | 18 | mm |
| RELACIÓN APROXIMADA | 15 | |
| RELACIÓN EXACTA | 14.00 | |
| VELOCIDAD DE SALIDA | 97 | RPM |
| VELOCIDAD DE SALIDA EXACTA | 104 | RPM |
| POTENCIA DE ENTRADA | 0.18 | KW |
| ROTACIÓN DE ENTRADA | 1400 | RPM |
| PAM DE ENTRADA | 63B14 | |
| PAR DE SALIDA | 13.24 | N.m |
| PAR NOMINAL | 30.00 | N.m |
| POTENCIA NOMINAL | 0.41 | KW |
| FACTOR DE SERVICIO | 2.28 | |
| EFICIENCIA DINÁMICA | 0.77 | |



Cantidad de Aceite (L)

| B3/H1 | B6/H4 | B7/H3 | B8/H2 | V5/H5 | V6/H6 |
|-------|-------|-------|-------|-------|-------|
| 0.09 | 0.09 | 0.09 | 0.09 | 0.09 | 0.09 |

Cargas Radiales y Axiales



| n_2 [min-1] | FA [N] | FR [N] |
|---------------|--------|--------|
| 200 | 180 | 900 |
| 100 | 220 | 1100 |
| 50 | 260 | 1400 |
| 15 | 400 | 2000 |

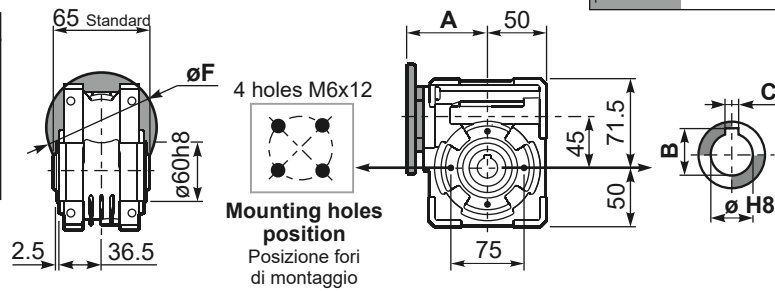
Universal Motors S.A.
 Rua Comendador Brandão, 484
 4495-375 Póvoa de Varzim
geral@universalmotors.pt
 TEL.: 252 299 080

Universal Motors UK, Ltd
 Unit E2, Meltham Mills Road
 West Yorkshire HD9 4AR
enquiries@universalmotors-group.co.uk
 TEL.: +44(0) 1484660222

Universal Motors SL
 C/La Habana n.6 nave 4 PI Camporoso
 28806 Alcalá de Henares
info@universalmotors-group.es
 TEL.: 918 864 213

PM45FB... Basic wormbox
Riduttore base

| M. flanges | Kit code | øF | A |
|--------------|------------|-----|------|
| 63B5 | K050.4.041 | 138 | 80 |
| 71B5 | K050.4.042 | 160 | 77.5 |
| 56B14 | KC40.4.049 | 80 | 77.5 |
| 63B14 | K050.4.047 | 90 | 80 |
| 71B14 | K050.4.045 | 105 | 77.5 |

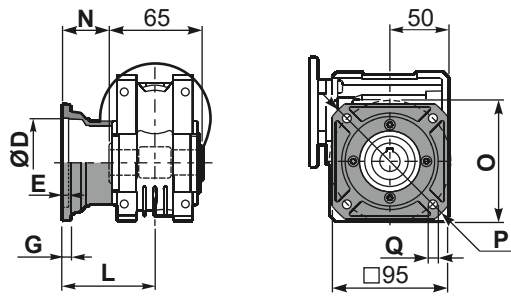


Gearbox weight
peso riduttore **2.30 kg**

| ø H8 | B | C | *Spacer code |
|-------------------------|------|---|--------------|
| 18 Standard | 20.8 | 6 | KM45.3.018 |
| 19 on request | 21.8 | 6 | KM45.3.019 |
| 20 on request | 22.8 | 6 | KM45.3.020 |

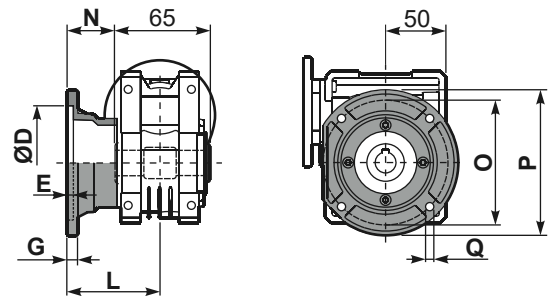
*On Request
output shaft with spacers

PM45FC... Square flange
Flangia quadrata



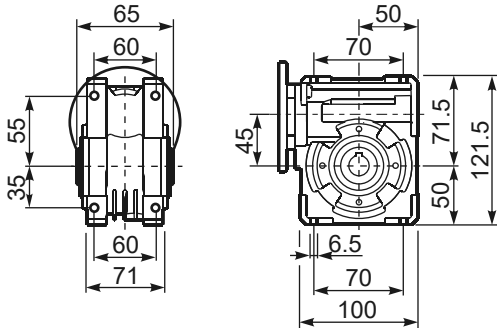
| type B | øD | E | G | L | N | O | P | Q | kit code |
|-----------|-------|---|---|----|------|----|-----|---|------------|
| FC | 60 H8 | 4 | 7 | 67 | 34.5 | 75 | 110 | 9 | KM45.9.010 |
| FL | 60 H8 | 4 | 7 | 97 | 64.5 | 75 | 110 | 9 | KM45.9.011 |

PM45F1... Round flange
Flangia rotonda

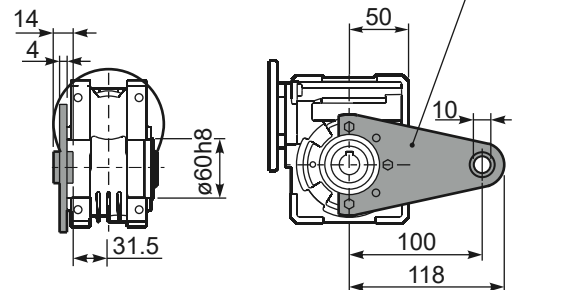


| type S | øD | E | G | L | N | O | P | Q | kit code |
|-----------|------|---|---|----|------|-----|-----|-----|------------|
| F1 | 95H8 | 5 | 9 | 80 | 47.5 | 115 | 140 | 9.5 | KM45.9.012 |
| F2 | - | - | - | - | - | - | - | - | - |

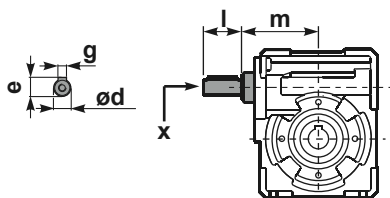
PM45FB... Feet
Piedini



PM45BR... Reaction arm
Braccio di reazione



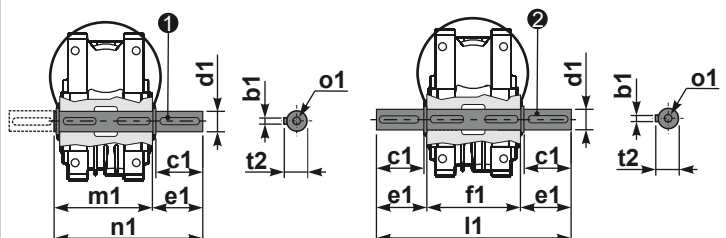
RM45FB... Input shaft
Albero in entrata



| | ød | e | g | l | m | x | kit code |
|--------|-------|------|---|----|----|---|---------------------------|
| type B | 11 h6 | 12.5 | 4 | 30 | 74 | - | ① K045.5.006 PAM71 ② - |
| type S | - | - | - | - | - | - | ① - ② - |

PM45.....S... Single Shaft
Albero lento semplice

PM45.....D... Double Shaft
Albero lento bisp.



① kit cod. K045.5.028 type B
kit cod. KS045.5.030 type S
② kit cod. K045.5.029 type B

| | b1 | c1 | d1 | e1 | f1 | l1 | m1 | n1 | t2 | o1 |
|--------|----|----|--|------|----|-----|----|-------|------|-------|
| type B | 6 | 32 | 18 ^{-0.005} _{-0.020} | 43 | 65 | 151 | 70 | 113 | 20.5 | M6x18 |
| type S | 6 | 40 | 19 ^{-0.005} _{-0.020} | 58.5 | - | - | 70 | 128.5 | 21.5 | M8x20 |